

# Thursday 25th June 2020

Today's Schedule

# Daily Reminders:

- Check work that has been returned to you for any feedback. If you have been given '100' that means you have completed the task and no more needs to be done. If you have a score less than 100, it means you need to revisit it and improve.
- Please do not 'share' documents with the teachers. Instead, try to use the 'hand it in' tool.
- Just do your best in completing the tasks set. We will not be upset if you are struggling to complete a task or if you cannot work out how to submit it. Please ask your family and friends to help you with this.
- If necessary, send us a private message on the task you are struggling with so we can help you solve it.

# TT Rockstars or NumBots

20 minutes

# A message from TT Rockstars ...

We got in touch with GUINNESS WORLD RECORDS about how fast some of our times tables rockers are getting. After some conversations they have created a new title - "the highest score achieved on 'Times Tables Rock Stars in one minute!'"

To make an Official Attempt, players need to record a video of themselves achieving their highest score in the Studio\* and send the video to [support@mathscircle.com](mailto:support@mathscircle.com) by 23:59 UK time on 4th June 2020.

\*Studio games go up  $12 \times 12$  and include corresponding division facts.

# Daily Maths Learning

40 minutes

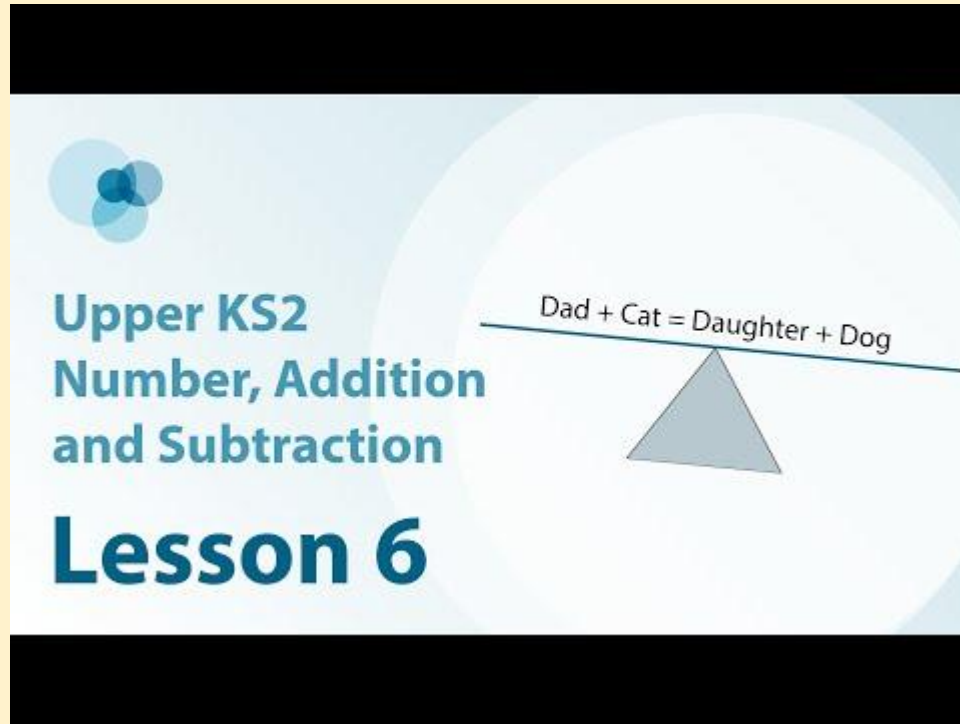
**MATHS**

$x-y=?$

$a+b+c$

# Lesson 7: If an addend is increased and the other is kept the same, the sum increases by the same amount

For this lesson you will need a piece of paper, pencil and a ruler.



Upper KS2  
Number, Addition  
and Subtraction

Lesson 6

Dad + Cat = Daughter + Dog

Keep the notes that you make in the lesson today. Tomorrow you will review them before beginning your new learning.

# Quiz

Open the quiz on Google Classroom and complete the questions for lesson 7.



# Reading

20 minutes

# Hilaire Belloc

1870 -1953

Listen and read along with  
Miss Lander

Use the text to help you  
answer today's **interpret**  
questions.

# Interpret:

1. How do you think having parents from two different countries might have affected Hilaire Belloc's childhood? Do you think this would have been a good or bad thing? Why?
2. What was Hilaire Belloc's nickname? What does this tell us about his personality  
a) as a child and b) as an adult?
3. How do we know that his love for his wife Elodie was very strong?

Answer the questions on the Google Form provided.



# Daily English Learning

40 minutes

# One Chance

Thursday 25th June 2020

## Now let's find out how close your predictions were. Read on!

### One Chance (contd)

Sarah gasped. This is just what she was looking for – another chance. Maybe lose the idle husband as well, she thought, shaking her head.

“I am going to give this a go. I am thinking lots of money to buy expensive clothes and maybe you can finally sort this house out,” she said to Jack, **rummaging** desperately in the drawer for a coin.

“Utter nonsense,” muttered Jack, glancing up from his book and taking in the room. “I love this old house and you just the way you are. Even if all that did come true, there’ll be a catch. No one gets something for nothing. Just throw it away.”

Sarah stopped and nodded **sullenly**. He was right. She made to throw the ticket on the fire, but something stopped her. Furtively, she **stashed** it in her pocket.

Later that evening, as Jack slept, Sarah retrieved the ticket and greedily scratched ‘Wish 2’, dreaming of **immense** riches or, to be precise, £100,000. Outside, a squally wind **howled**. Inside, nothing happened. Bitterly, she tossed the ticket into the bin.

The next day, the wind died down to a cool, whispering breeze. Jack prepared for his early morning walk with Hope. Pulling his woollen hat firmly down over his ears, he called out to Sarah that he wouldn’t be out long and left. Sarah **scowled**. She could barely respond.



## Now let's find out how close your predictions were. Read on!

Eight hours passed and Sarah began to worry – where were Jack and Hope? Shaking with fear, she dialled 999, hoping for the best but fearing the worst.

A massive search was launched but there was no sign. Jack and Hope had simply vanished. Sarah was **distraught**. Deep down she worried if their disappearance had anything to do with the golden ticket.

Days later, as the wind whipped up again, a woman in a black cloak knocked at the door. She told Sarah she had been sent to offer some **compensation** for her sad loss. Sarah was feeling desperate so asked, “How much?”

“Shall we say... £100,000?” Shocked, Sarah recalled the greedy sum she had wished for. Could it be true? Had her selfish wish actually been granted? Quickly, she raced outside and **rummaged** desperately through the bin, trying to locate the **discarded** ticket. With sickening dread, she smoothed out the crumpled ticket and gasped in horror. It was true. The second wish had been redeemed.

Golden Lottery Ticket Ltd.

Congratulations!

You have been selected as one of our lucky lottery winners.

This golden ticket entitles you to receive one of three exclusive wishes.

Simply, scratch the card and make your wish.

Once you have claimed your wish, pass on the luck!

~~Wish 1~~

Redeemed

~~Wish 2~~

Redeemed

Wish 3

Scratch here

Small print: Remember to use your precious wish wisely - wealth is not the root to happiness.

## Now let's find out how close your predictions were. Read on!

Sarah leaned against the bin for support, her head spinning, her thoughts in **turmoil**. Then she **gathered herself together**. There was still one final wish left ... Could she use it to try and bring Jack and Hope back? She needed a coin, quick.

Just then, without warning, the squally wind howled and snatched the ticket from her hand. It spiralled, higher and higher like autumn leaves in a storm and then, like the mysterious woman herself, it was gone. Sarah cried out of helpless pain. Inside, the shabby curtains were drawn and a humble fire crackled.

© **Dean Thompson, 2020**

# What do the words mean?

Have a look back at the story. All of the words below are in bold.

See if you can work out what they mean from the context of the story and jot your ideas down in the grid on the Google Doc.

If you are stuck, here is a list of matching words to help you. If you are still stuck, you could ask someone else in your home to tell you, or use a dictionary or the web.

## Similar words help box

upset	sulkily	uncertainly	searching	confusion
roared	damages	furious	frowned	became
calmer	enormous	small	threw away	put away
claimed	unique	stormy	tatty	



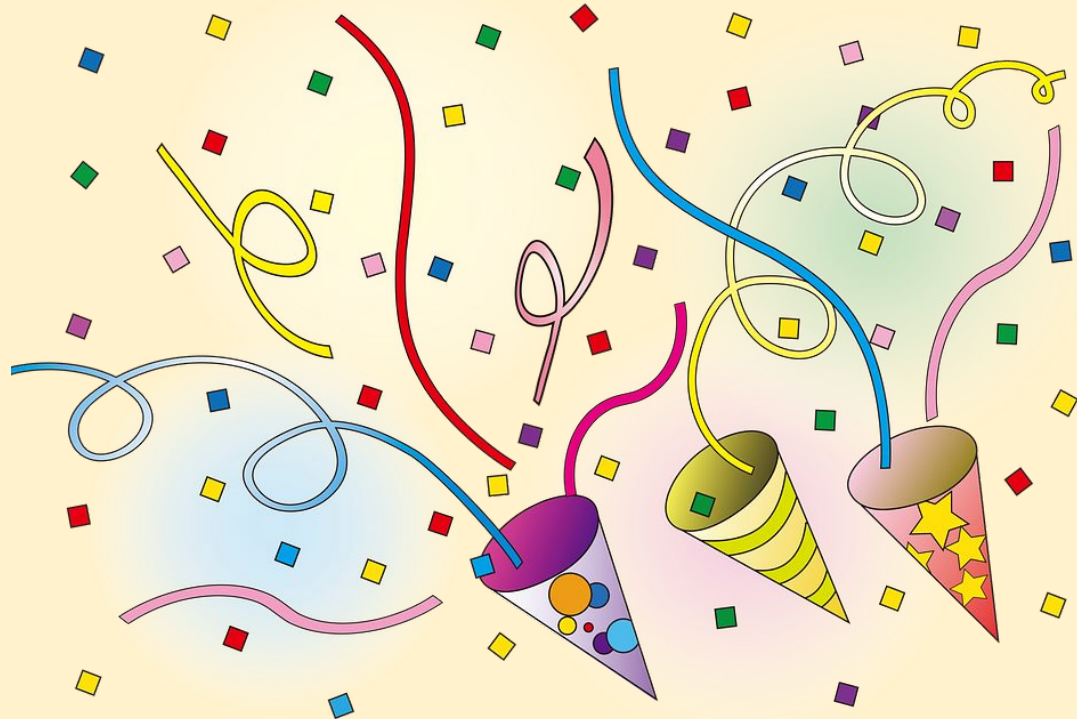
**Challenge: Many words can mean different things depending on the context they are used in. Investigate whether there are other possible meanings for the word using a dictionary or the web. Jot your findings in the grid.**

# Word of the Week

5 minutes

Round of applause for this week's word:

**pelt**



**Can we add a prefix or suffix?**



# Wider Work - Science

1 hour

**LO: To identify and classify  
tree leaves.**

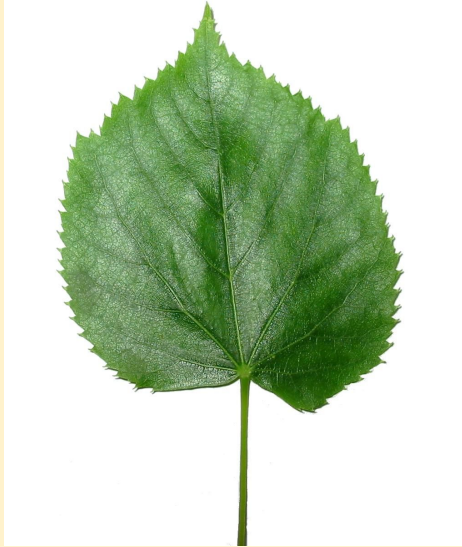
**Thursday 25th June 2020**

LO: To identify and classify tree leaves.

Can you remember what the  
life cycle of a tree is?

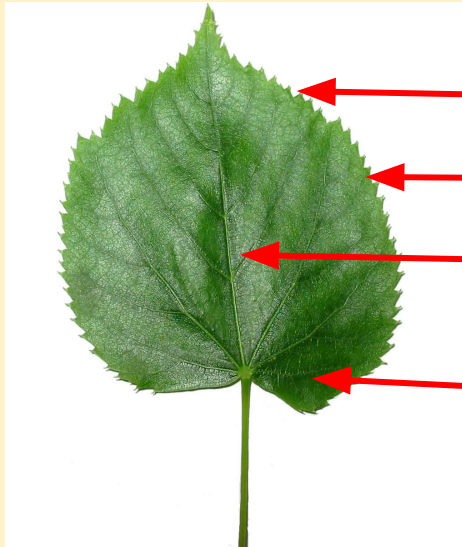
LO: To identify and classify tree leaves.

Go outside and collect three different looking leaves.



LO: To identify and classify tree leaves.

Now draw them and label any features you notice.



Spiky edges

About as large as a \_\_\_\_\_

Dark green colour

One section

LO: To identify and classify tree leaves

Look them up to identify which tree they have come from.

LO: To identify and classify tree leaves

Write down what these words  
mean:

1. Deciduous
2. Evergreen

LO: To identify and classify tree leaves

Now classify your leaves as  
coming from a tree that is

A. Deciduous

B. Evergreen



# Creative Learning Opportunities

1 hours

# Choose an activity to complete in this time. Create a journal to keep track of the activities you have done.

## Creative Learning Opportunities:

<https://classroom.google.com/u/0/c/Njl4NDkyODk0ODBa/m/NTQ1NzQ1NzYzMDJa/details>

<https://classroom.google.com/u/0/c/Njl4NDkyODk0ODBa/m/NTQ4NjlzMDQ5MjJa/details>

<https://classroom.google.com/u/0/c/Njl4NDkyODk0ODBa/a/NTM2NTM5NTM2MzRa/details>

<https://classroom.google.com/u/0/c/Njl4NDkyODk0ODBa/m/NzM3MTQ3OTEwNzNa/details>

<https://classroom.google.com/u/0/c/Njl4NDkyODk0ODBa/m/NjEzODc1MTUwMDVa/details>

<https://classroom.google.com/u/0/c/Njl4NDkyODk0ODBa/a/NTQyNjQzNzk3MDFa/details>

Create your journal using the slides created here:

<https://classroom.google.com/u/0/c/Njl4NDkyODk0ODBa/a/NzQzMDgyNTE1ODRa/details>

# PE

30 mins to 1 hour

# Real PE

The website address is: [home.jasmineactive.com](http://home.jasmineactive.com)

Parent email: [parent@whyteleafe-1.com](mailto:parent@whyteleafe-1.com)

Password: whyteleafe

Login and access the daily and weekly guidance for PE at home

# Fitt In

Website : [https://www.fitt-in.co.uk/checkout?rid=m4xDde&cf\\_3=g95](https://www.fitt-in.co.uk/checkout?rid=m4xDde&cf_3=g95)

Username : [whyteleafeprimary@fitt-in.co.uk](mailto:whyteleafeprimary@fitt-in.co.uk)

Password : WPS2020HomeUserA1F

Login and access lots of videos and resources to do PE at home