

# Wednesday 24th June 2020

## Today's Schedule

# Daily Reminders:

- Check work that has been returned to you for any feedback. If you have been given '100' that means you have completed the task and no more needs to be done. If you have a score less than 100, it means you need to revisit it and improve.
- Please do not 'share' documents with the teachers. Instead, try to use the 'hand it in' tool.
- Just do your best in completing the tasks set. We will not be upset if you are struggling to complete a task or if you cannot work out how to submit it. Please ask your family and friends to help you with this.
- If necessary, send us a private message on the task you are struggling with so we can help you solve it. Messages should only be sent through the 'Private Messages' assignment, not on individual assignments.

# TT Rockstars or NumBots

20 minutes

# A message from TT Rockstars ...

We got in touch with GUINNESS WORLD RECORDS about how fast some of our times tables rockers are getting. After some conversations they have created a new title - "the highest score achieved on 'Times Tables Rock Stars in one minute!'"

To make an Official Attempt, players need to record a video of themselves achieving their highest score in the Studio\* and send the video to [support@mathscircle.com](mailto:support@mathscircle.com) by 23:59 UK time on 4th June 2020.

\*Studio games go up  $12 \times 12$  and include corresponding division facts.

# Daily Maths Learning

40 minutes

**MATHS**

$x-y=?$

$a+b+c$

# Lesson 6: Balancing equations noticing that the order of the addends is not important

For this lesson you will need a piece of paper, pencil and a ruler.

Upper KS2  
Number, Addition  
and Subtraction  
**Lesson 6**

Dad + Cat = Daughter + Dog

The image shows a title card for a lesson. On the left, there is a logo consisting of three overlapping circles in shades of blue. The text 'Upper KS2 Number, Addition and Subtraction' is written in a blue sans-serif font. Below this, 'Lesson 6' is written in a larger, bold blue font. On the right side, there is a graphic of a balance scale. The scale is tilted, with the left side being lower than the right side. A grey triangle serves as the fulcrum. The text 'Dad + Cat = Daughter + Dog' is written across the horizontal beam of the scale.

Keep the notes that you make in the lesson today. Tomorrow you will review them before beginning your new learning.

# Quiz

Open the quiz on Google Classroom and complete the questions for lesson 6.



# Reading

20 minutes

# Hilaire Belloc

1870 - 1953

Listen and read along with  
Miss Lander

Use the text to help you  
answer today's **explain**  
questions.

# Explain:

1. How can you tell that Hilaire Belloc was a 'versatile writer'?
2. What did Hilaire Belloc's family decide to do after his father's death? Why?
3. What did becoming a British national allow Hilaire Belloc to do?

Answer the questions on the Google Form provided.



# Daily English Learning

40 minutes

# One Chance

Wednesday 24th June 2020

# The Mirror of Despair

On the wall, there is also the mirror of despair! This always shows what you fear most of all happening. Either make a new list of people who might look into the mirror of despair and think about what they would most fear to see or write about the same characters to find out what they might most fear. Once again, Pie has written each idea using the same pattern.

**Try copying his pattern but use your own characters and ideas about what they might most hate to have happen in their lives. Write your poem on the slide at the end.**



# The Mirror of Despair

© Pie Corbett 2020

The teacher looked into the mirror

And saw children throwing paper airplanes.

A sailor looked into the mirror

And saw a tsunami approaching.

Superman looked into the mirror

And saw he was wearing a pair of kryptonite tights!

An astronaut looked into the mirror

And saw an asteroid as big as Bristol approaching

A pirate looked into the mirror

And saw sharks gathering beneath the plank.

A dragon hunter looked into the mirror

And saw that he had picked up a plastic sword by mistake.

A writer looked into the mirror

And saw a library burst into flames.

Now it's your turn:

## Now read or listen to this story:

### One Chance

Outside, the evening was cold and wet. A **squally** wind howled, rattling the roof tiles and shaking the window frames of 13 Wager Road. Inside, **shabby** curtains were drawn, a **humble** fire crackled and a couple sat in silence. Jack stretched out on the tired couch with an amused smile, turning the page of his favourite novel. Sarah **scowled**, silently **seething**. She scanned the room, noticing the worn-out furniture, peeling paint and, in her opinion, a pointless, idle husband. She deserved so much more than this.

Suddenly, the letterbox jangled and there was a solitary but decisive knock on the door. Hope, the Labrador, barked. Sarah pulled back the curtain and watched as a hooded figure slipped silently away up the road. Puzzled, she stared down at a golden card that had appeared, glinting on the frayed doormat.

**Tentatively**, she gathered it up and read it out loud:

*Golden Lottery Ticket Ltd.*

*Congratulations!*

*You have been selected as one of our lucky lottery winners.*

*This golden ticket entitles you to receive one of three exclusive wishes.*

*Simply, scratch the card and make your wish.*

*Once you have claimed your wish, pass on the luck!*

*Wish 1*

*Redeemed*

*Wish 2*

*Scratch here*

*Wish 3*

*Scratch here*

*Small print: Remember to use your precious wish wisely - wealth is not the root of happiness.*

**What next?**

**We've stopped at an interesting part of the story.  
Summarise below what you think could happen next.**

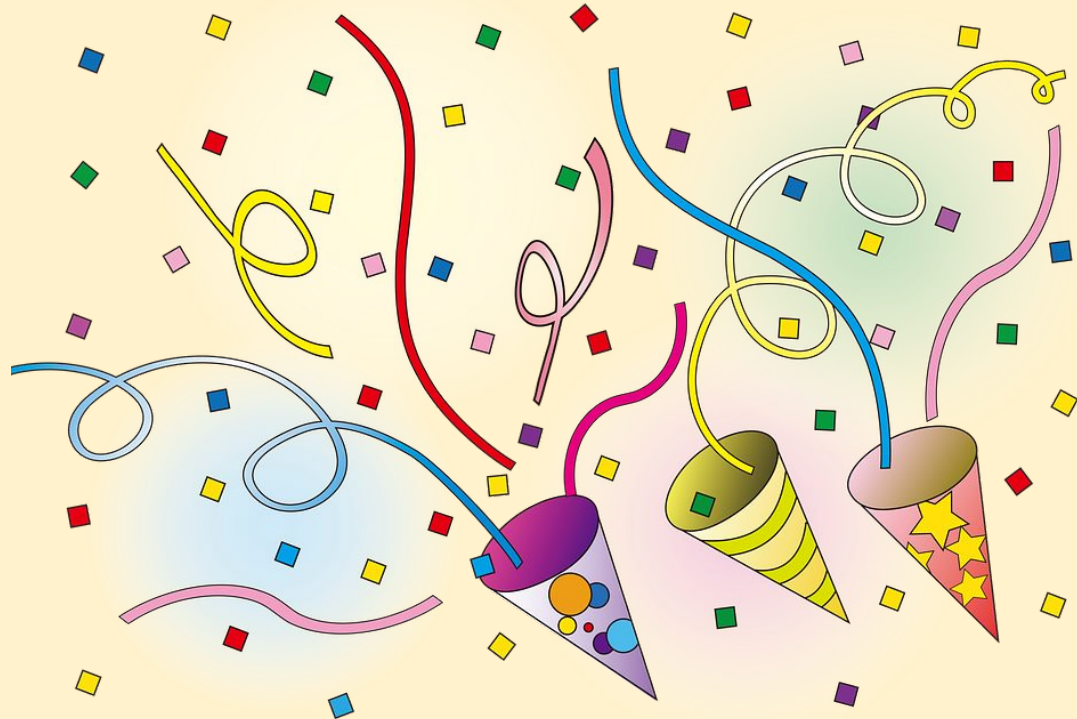
*I predict...*

# Word of the Week

5 minutes

Round of applause for this week's word:

**pelt**



Can you put it in a sentence?





# Wider Work - French and Music

1 hour

French and Music slides will  
be added to Google  
Classroom separately.

# Creative Learning Opportunities

1 hours

# Choose an activity to complete in this time. Create a journal to keep track of the activities you have done.

## Creative Learning Opportunities:

<https://classroom.google.com/u/0/c/Njl4NDkyODk0ODBa/m/NTQ1NzQ1NzYzMDJa/details>

<https://classroom.google.com/u/0/c/Njl4NDkyODk0ODBa/m/NTQ4NjlzMDQ5MjJa/details>

<https://classroom.google.com/u/0/c/Njl4NDkyODk0ODBa/a/NTM2NTM5NTM2MzRa/details>

<https://classroom.google.com/u/0/c/Njl4NDkyODk0ODBa/m/NzM3MTQ3OTEwNzNa/details>

<https://classroom.google.com/u/0/c/Njl4NDkyODk0ODBa/m/NjEzODc1MTUwMDVa/details>

<https://classroom.google.com/u/0/c/Njl4NDkyODk0ODBa/a/NTQyNjQzNzk3MDFa/details>

Create your journal using the slides created here:

<https://classroom.google.com/u/0/c/Njl4NDkyODk0ODBa/a/NzQzMDgyNTE1ODRa/details>

# PE

30 mins to 1 hour

# Real PE

The website address is: [home.jasmineactive.com](http://home.jasmineactive.com)

Parent email: [parent@whyteleafe-1.com](mailto:parent@whyteleafe-1.com)

Password: whyteleafe

Login and access the daily and weekly guidance for PE at home

# Fitt In

Website : [https://www.fitt-in.co.uk/checkout?rid=m4xDde&cf\\_3=g95](https://www.fitt-in.co.uk/checkout?rid=m4xDde&cf_3=g95)

Username : [whyteleafeprimary@fitt-in.co.uk](mailto:whyteleafeprimary@fitt-in.co.uk)

Password : WPS2020HomeUserA1F

Login and access lots of videos and resources to do PE at home