

# Thursday 18th June 2020

Today's Schedule

# Daily Reminders:

- Check work that has been returned to you for any feedback. If you have been given '100' that means you have completed the task and no more needs to be done. If you have a score less than 100, it means you need to revisit it and improve.
- Please do not 'share' documents with the teachers. Instead, try to use the 'hand it in' tool.
- Just do your best in completing the tasks set. We will not be upset if you are struggling to complete a task or if you cannot work out how to submit it. Please ask your family and friends to help you with this.
- If necessary, send us a private message on the task you are struggling with so we can help you solve it.

# TT Rockstars or NumBots

20 minutes

# A message from TT Rockstars ...

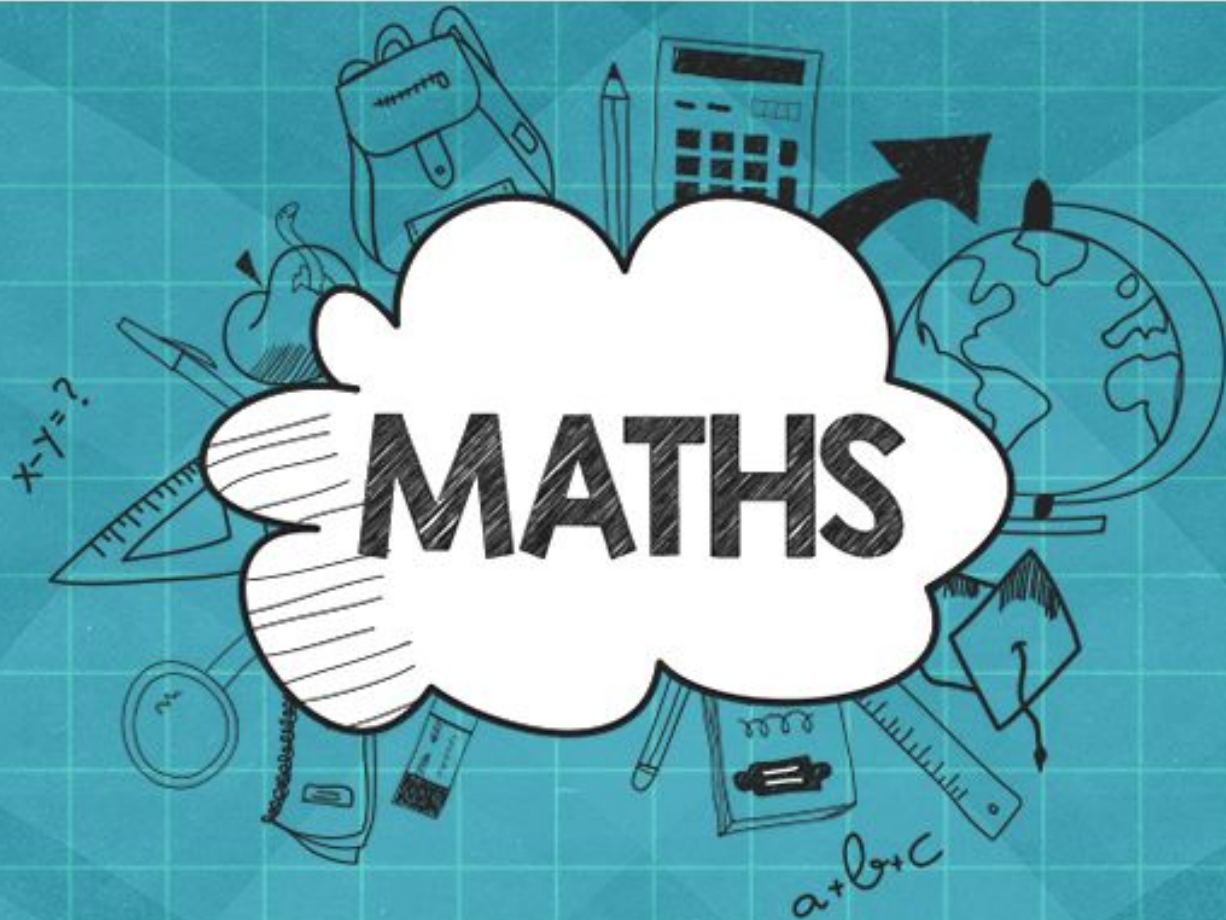
We got in touch with GUINNESS WORLD RECORDS about how fast some of our times tables rockers are getting. After some conversations they have created a new title - "the highest score achieved on 'Times Tables Rock Stars in one minute!'"

To make an Official Attempt, players need to record a video of themselves achieving their highest score in the Studio\* and send the video to [support@mathscircle.com](mailto:support@mathscircle.com) by 23:59 UK time on 4th June 2020.

\*Studio games go up  $12 \times 12$  and include corresponding division facts.

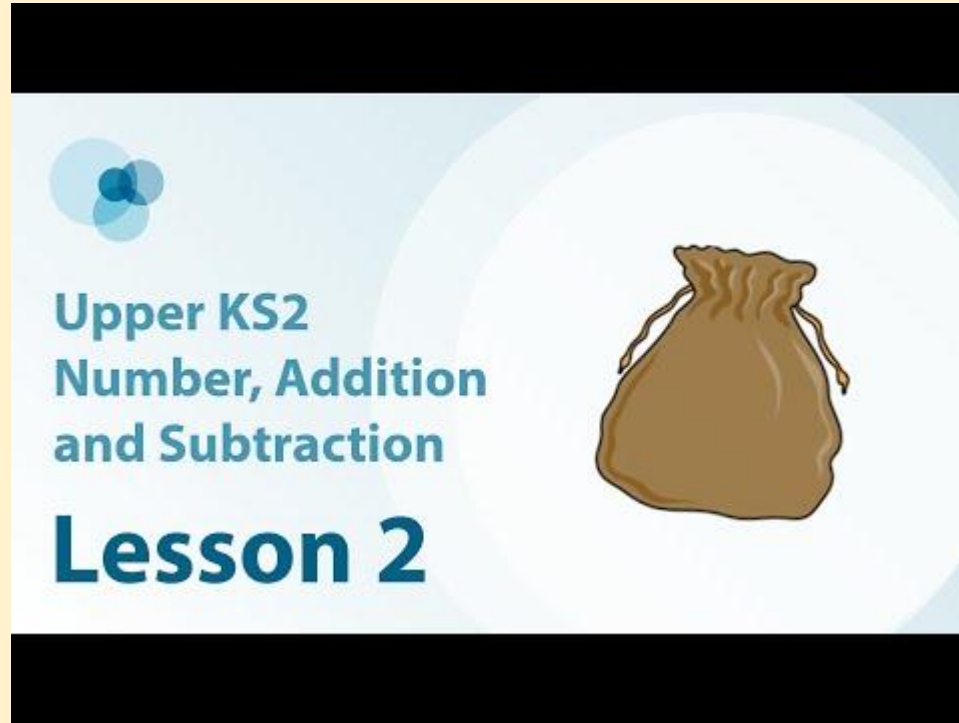
# Daily Maths Learning

40 minutes



## Lesson 2: Extend 'same sum' strategy to the addition of large numbers

For this lesson you will need a piece of paper, pencil and a ruler.

A title card for a lesson. It features a light blue background with a white circle in the center. To the left of the circle is a logo consisting of three overlapping circles in shades of blue. To the right is a brown drawstring bag. The text is in blue and black. The text reads: "Upper KS2", "Number, Addition and Subtraction", and "Lesson 2".

Upper KS2  
Number, Addition  
and Subtraction  
**Lesson 2**

Keep the notes that you make in the lesson today. Tomorrow you will review them before beginning your new learning.

<https://youtu.be/fetTcAFpbZc>





# Reading

20 minutes

# Henry King

Who chewed bits of strings, and was early cut off in  
dreadful agonies  
*by Hilaire Belloc*

Listen and read along with  
Miss Lander

Use the text to help you  
answer today's **interpret**  
questions.

# Interpret:

1. Who do you think called the physicians to help?
2. Why do you think Henry King utters his last words?
3. Does the fact that the doctors who were called were of 'the utmost fame' suggest Henry King came from a rich or poor family? Explain your answer.

Answer the questions on the Google Form provided.



# Daily English Learning

40 minutes

**LO: To write a finding story.**

Thursday 18th June 2020

Are you ready to write your story after yesterday's boxing up?

Then

- ★ write it
- ★ read it
- ★ and check it!
- ★ See you at the end!





# Word of the Week

5 minutes

Round of applause for this week's word:

**obnoxious**



**Can we add a prefix or suffix?**

# Wider Work - Science

1 hour

LO: To explain how plants reproduce.

# Pollination

In order to produce a new plant many flowering plants need to be **pollinated**.

This means that **pollen**, produced by the male part of the plant, needs to reach the **stigma**.

Many plants cannot be **pollinated** by their own **pollen**.

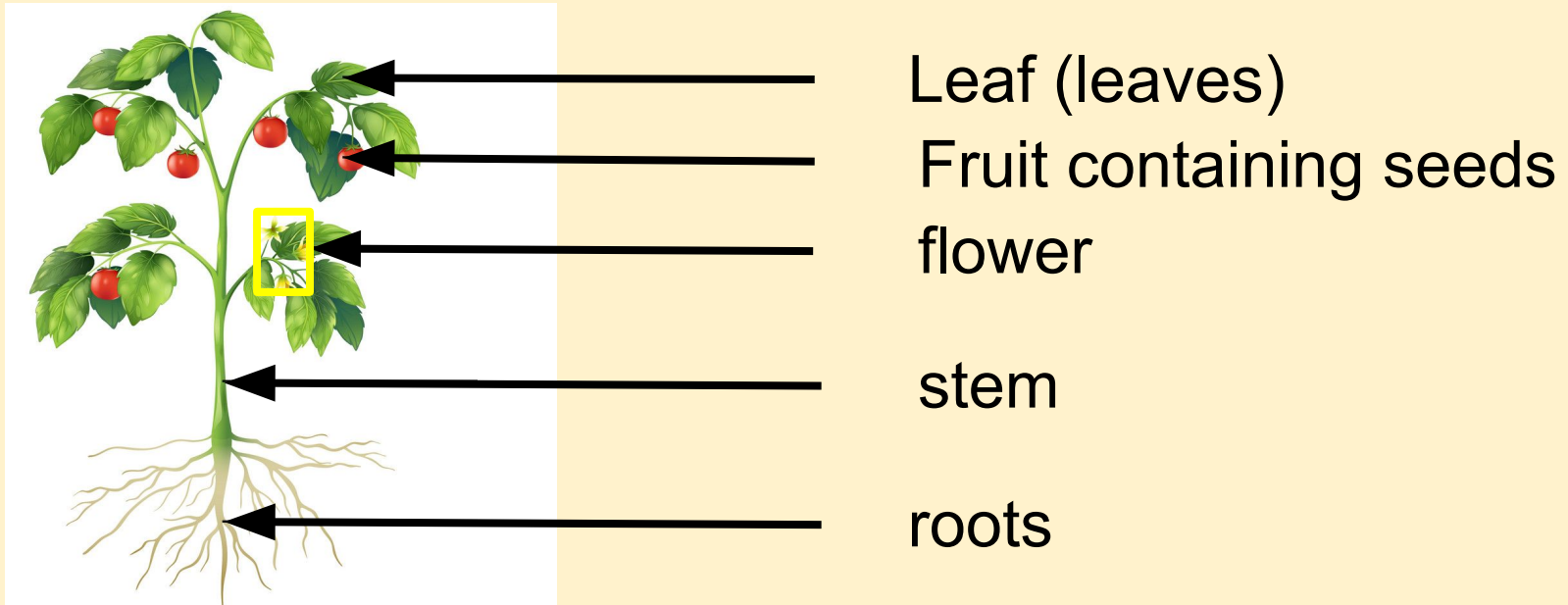
The **pollen** must land on another plant of the same **species** (type).

This is called cross **pollination**.



LO: To explain how plants reproduce.

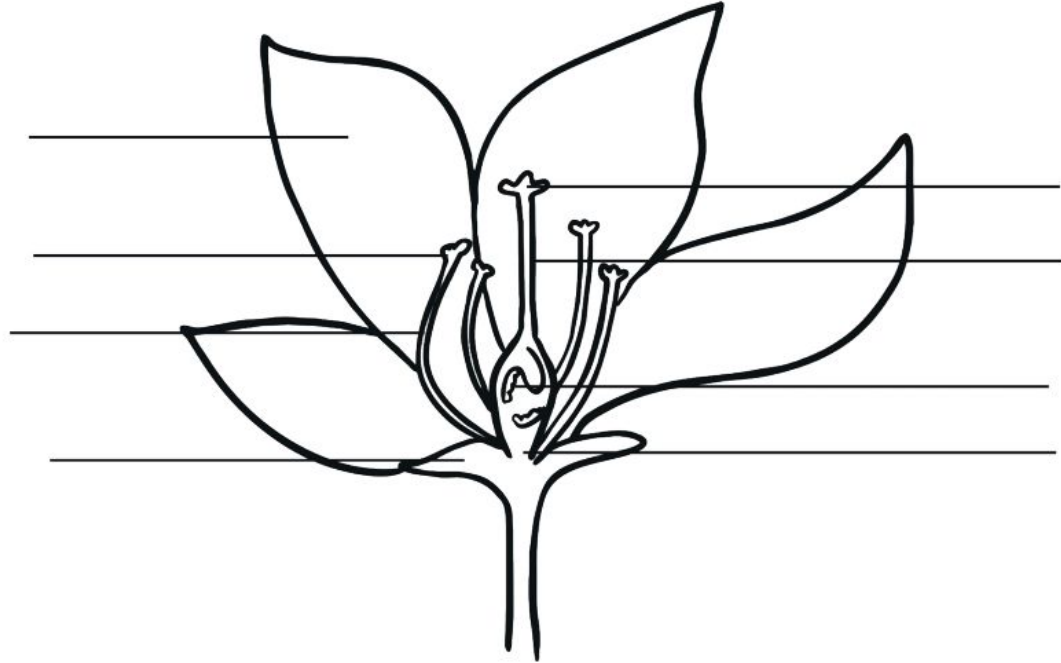
# Pollination



LO: To explain how plants reproduce

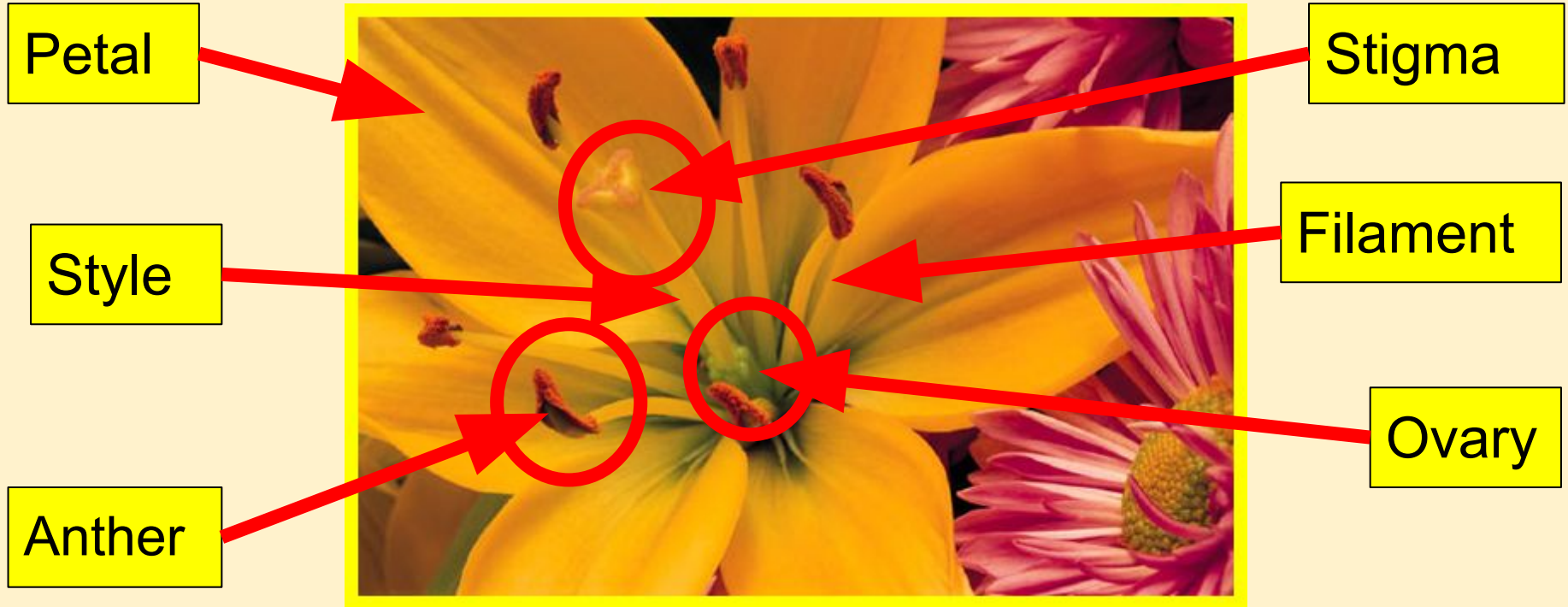
# Pollination

Label the  
different  
parts of the  
flower.



LO: To explain how plants reproduce

# Pollination





LO: To explain how plants reproduce

# Pollination

Petal

Stigma

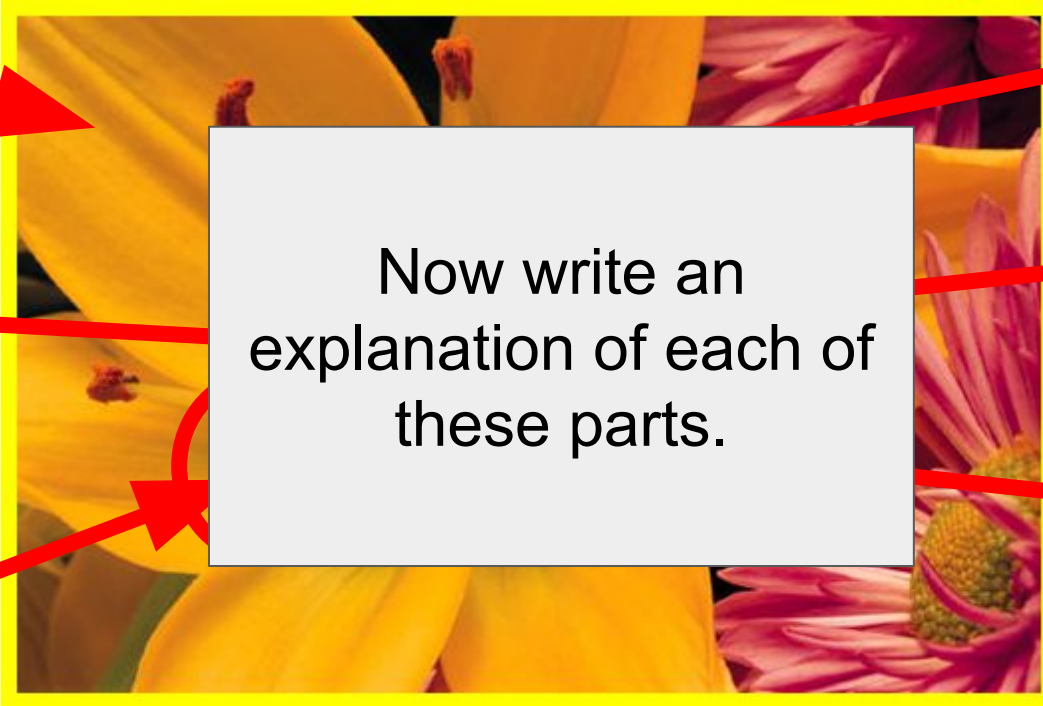
Style

Filament

Anther

Ovary

Now write an explanation of each of these parts.





# Creative Learning Opportunities

1 hours

# Choose an activity to complete in this time. Create a journal to keep track of the activities you have done.

## Creative Learning Opportunities:

<https://classroom.google.com/u/0/c/Njl4NDkyODk0ODBa/m/NTQ1NzQ1NzYzMDJa/details>

<https://classroom.google.com/u/0/c/Njl4NDkyODk0ODBa/m/NTQ4NjlzMDQ5MjJa/details>

<https://classroom.google.com/u/0/c/Njl4NDkyODk0ODBa/a/NTM2NTM5NTM2MzRa/details>

<https://classroom.google.com/u/0/c/Njl4NDkyODk0ODBa/m/NzM3MTQ3OTEwNzNa/details>

<https://classroom.google.com/u/0/c/Njl4NDkyODk0ODBa/m/NjEzODc1MTUwMDVa/details>

<https://classroom.google.com/u/0/c/Njl4NDkyODk0ODBa/a/NTQyNjQzNzk3MDFa/details>

Create your journal using the slides created here:

<https://classroom.google.com/u/0/c/Njl4NDkyODk0ODBa/a/NzQzMDgyNTE1ODRa/details>

# PE

30 mins to 1 hour

# Real PE

The website address is: [home.jasmineactive.com](http://home.jasmineactive.com)

Parent email: [parent@whyteleafe-1.com](mailto:parent@whyteleafe-1.com)

Password: whyteleafe

Login and access the daily and weekly guidance for PE at home

# Fitt In

Website : [https://www.fitt-in.co.uk/checkout?rid=m4xDde&cf\\_3=g95](https://www.fitt-in.co.uk/checkout?rid=m4xDde&cf_3=g95)

Username : [whyteleafeprimary@fitt-in.co.uk](mailto:whyteleafeprimary@fitt-in.co.uk)

Password : WPS2020HomeUserA1F

Login and access lots of videos and resources to do PE at home