

Tuesday 16th June 2020

Today's Schedule

Daily Reminders:

- Check work that has been returned to you for any feedback. If you have been given '100' that means you have completed the task and no more needs to be done. If you have a score less than 100, it means you need to revisit it and improve.
- Please do not 'share' documents with the teachers. Instead, try to use the 'hand it in' tool.
- Just do your best in completing the tasks set. We will not be upset if you are struggling to complete a task or if you cannot work out how to submit it. Please ask your family and friends to help you with this.
- If necessary, send us a private message on the task you are struggling with so we can help you solve it.

TT Rockstars or NumBots

20 minutes

A message from TT Rockstars ...

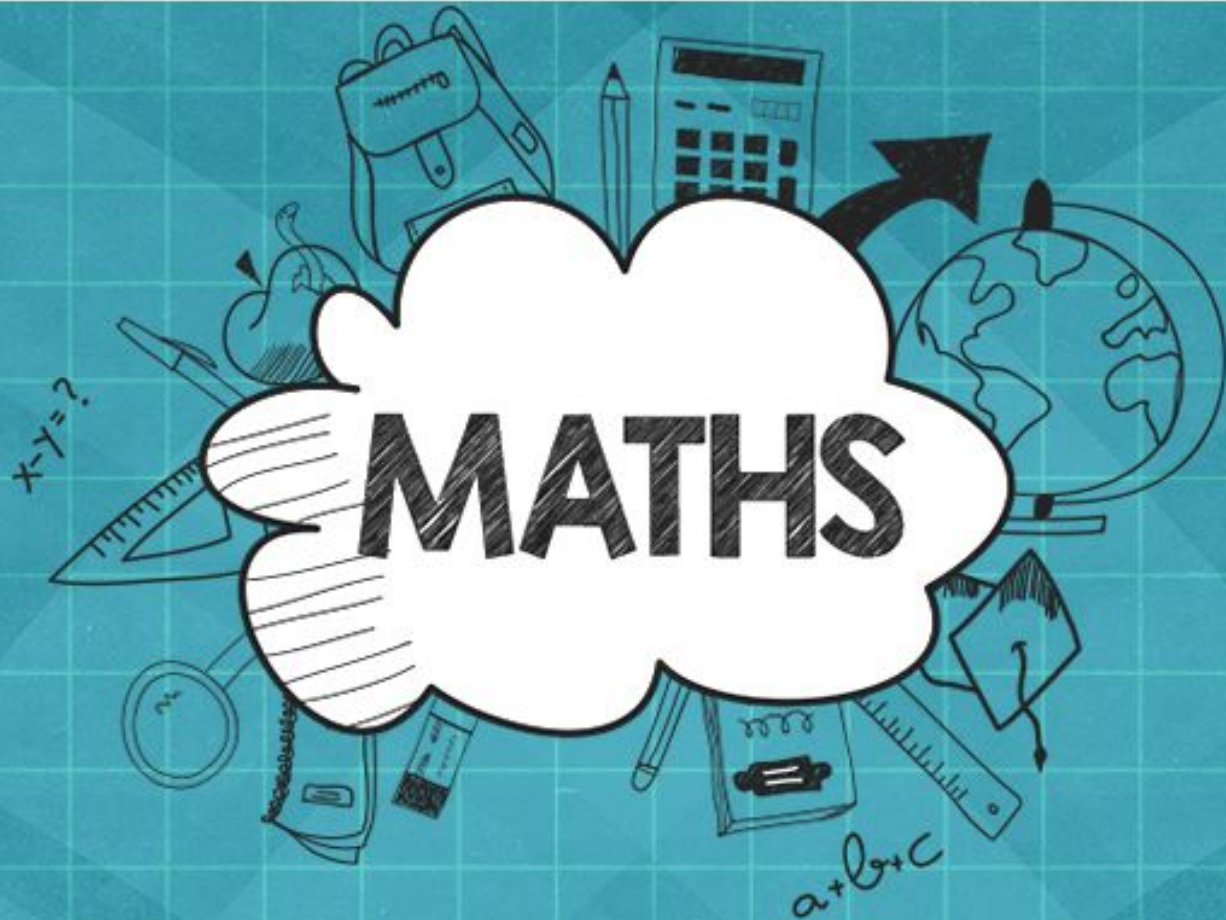
We got in touch with GUINNESS WORLD RECORDS about how fast some of our times tables rockers are getting. After some conversations they have created a new title - "the highest score achieved on 'Times Tables Rock Stars in one minute!'"

To make an Official Attempt, players need to record a video of themselves achieving their highest score in the Studio* and send the video to support@mathscircle.com by 23:59 UK time on 4th June 2020.

*Studio games go up 12×12 and include corresponding division facts.

Daily Maths Learning

40 minutes



Lesson 20: Summary of the whole unit

For this lesson you will need a piece of paper, pencil and a ruler.



Keep the notes that you make in the lesson today. Tomorrow you will review them before beginning your new learning.

<https://youtu.be/L7tjKHZUSpo>

Reflection

Write a reflection (using the Google forms document provided) about everything we have looked at during the last 20 videos.

Your reflection should include at least 5 statements of what you know about fractions. Use the following sentence starters to help.

I know that...

I can...

I know how to...

Vocabulary to include in your reflection:

whole	common factor	equal
equivalent	non-unit fraction	simplify
numerator	denominator	factor
multiple	unit fraction	vertical
part	improper fraction	horizontal

Reading

20 minutes

Henry King

Who chewed bits of strings, and was early cut off in
dreadful agonies
by Hilaire Belloc

Listen and read along with
Miss Lander

Use the text to help you
answer today's **retrieval**
questions.

Retrieval:

1. What did Henry King like to chew?
2. Who were called at once to help?
3. Was there a cure for this disease?

Answer the questions on the
Google Form provided.



Daily English Learning

40 minutes

The Game

Tuesday 16th June 2020

Now let's plan our writing of a brand new finding tale.

It doesn't have to be set in school or involve a game.

You could even think about writing the prequel of the story about what happens when Billy investigates the game the next time it's wet play!

You're going to complete today's work on Google Docs and it will look like this...

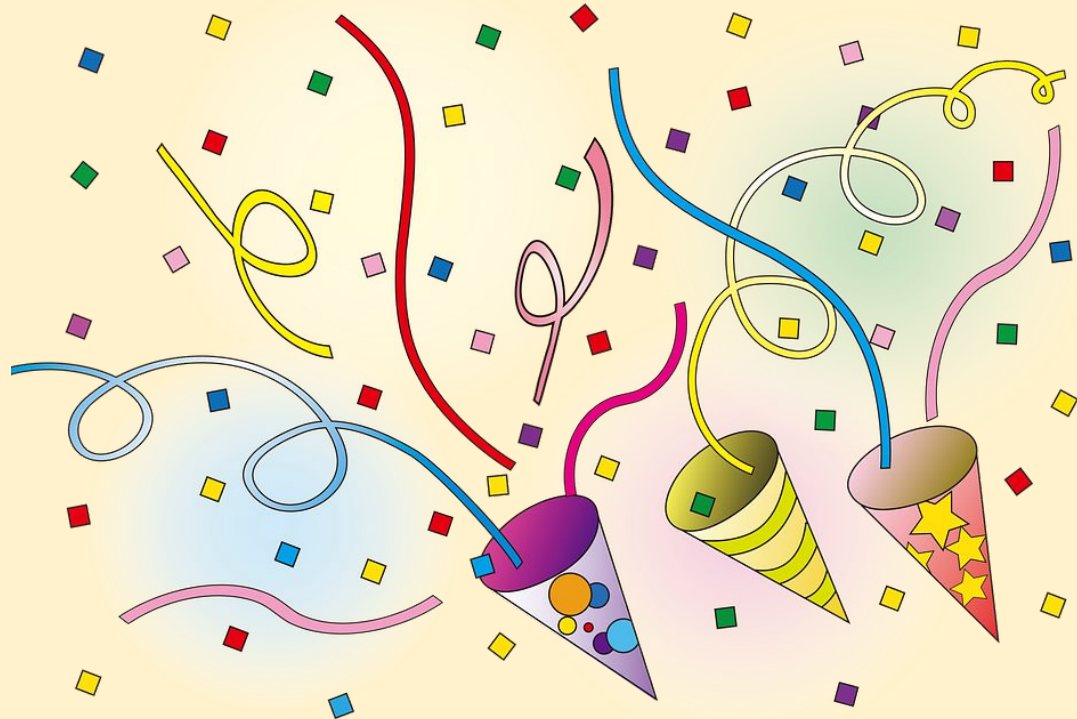
Think about:	Your ideas:
<p>Where could the story take place? e.g. a field, a football match, a restaurant, at home - where else?</p>	
<p>What could the object be? e.g. a book, shoes, wand, a phone, a bucket, a pen - what else?</p>	
<p>What happens when the object is found? e.g. events in the book come to life, shoes turn you into different people, wands cast disastrous spells, phones turn people into robots - what else?</p>	

Word of the Week

5 minutes

Round of applause for this week's word:

obnoxious



Write this meaning and compare with what you thought it meant.

Adjective

extremely unpleasant

"obnoxious odours"

Wider Work - History

1 hour

L.O: To explain where the Vikings came from and why they settled in Britain.

Tuesday 16th June 2020

L.O: To explain where the Vikings came from and why they settled in Britain.

<https://www.history.org.uk/primary/resource/3867/the-vikings-in-britain-a-brief-history>

<http://www.primaryhomeworkhelp.co.uk/viking/settle.html>

Use the links above to read and discover where the Vikings came from and where they settled to in England.

Make notes on the information you read.

L.O: To explain where the Vikings came from and why they settled in Britain.

Where did the Vikings settle in Britain?

Vikings travelled from Scandinavia to Britain. They mostly settled in the Danelaw, to the north and east of England.

Some Norwegian Vikings or 'Norse' sailed to Scotland. They made settlements in the north, and on the Shetland and Orkney Islands.

Vikings also settled on the Isle of Man and often raided Wales, but few made homes there. In Ireland, the Vikings founded the city of Dublin.



L.O: To explain where the Vikings came from and why they settled in Britain.

Use the information you have found to make a representation of the Viking's journey to England. Your representation could be:

- A labeled drawing/map
- A diary entry from a Viking
- A story map using images and words
- A storyboard with a caption for each image

Thinking Deeply Challenge:
Can you include the following words in your representation?

historian, invader, settlement

Creative Learning Opportunities

1 hours

Choose an activity to complete in this time. Create a journal to keep track of the activities you have done.

Creative Learning Opportunities:

<https://classroom.google.com/u/0/c/Njl4NDkyODk0ODBa/m/NTQ1NzQ1NzYzMDJa/details>

<https://classroom.google.com/u/0/c/Njl4NDkyODk0ODBa/m/NTQ4NjlzMDQ5MjJa/details>

<https://classroom.google.com/u/0/c/Njl4NDkyODk0ODBa/a/NTM2NTM5NTM2MzRa/details>

<https://classroom.google.com/u/0/c/Njl4NDkyODk0ODBa/m/NzM3MTQ3OTEwNzNa/details>

<https://classroom.google.com/u/0/c/Njl4NDkyODk0ODBa/m/NjEzODc1MTUwMDVa/details>

<https://classroom.google.com/u/0/c/Njl4NDkyODk0ODBa/a/NTQyNjQzNzk3MDFa/details>

Create your journal using the slides created here:

<https://classroom.google.com/u/0/c/Njl4NDkyODk0ODBa/a/NzQzMDgyNTE1ODRa/details>

PE

30 mins to 1 hour

Real PE

The website address is: home.jasmineactive.com

Parent email: parent@whyteleafe-1.com

Password: whyteleafe

Login and access the daily and weekly guidance for PE at home

Fitt In

Website : https://www.fitt-in.co.uk/checkout?rid=m4xDde&cf_3=g95

Username : whyteleafeprimary@fitt-in.co.uk

Password : WPS2020HomeUserA1F

Login and access lots of videos and resources to do PE at home