

Wednesday 15th July 2020

Today's Schedule

Daily Reminders:

- Check work that has been returned to you for any feedback. If you have been given '100' that means you have completed the task and no more needs to be done. If you have a score less than 100, it means you need to revisit it and improve.
- Please do not 'share' documents with the teachers. Instead, try to use the 'hand it in' tool.
- Just do your best in completing the tasks set. We will not be upset if you are struggling to complete a task or if you cannot work out how to submit it. Please ask your family and friends to help you with this.
- If necessary, send us a private message on the task you are struggling with so we can help you solve it. Messages should only be sent through the 'Private Messages' assignment, not on individual assignments.

TT Rockstars or NumBots

20 minutes

A message from TT Rockstars ...

We got in touch with GUINNESS WORLD RECORDS about how fast some of our times tables rockers are getting. After some conversations they have created a new title - "the highest score achieved on 'Times Tables Rock Stars in one minute!'"

To make an Official Attempt, players need to record a video of themselves achieving their highest score in the Studio* and send the video to support@mathscircle.com by 23:59 UK time on 4th June 2020.

*Studio games go up 12×12 and include corresponding division facts.

Daily Maths Learning

40 minutes

MATHS

$x-y=?$

$a+b+c$

Lesson 21 Explore how the generalisation can be used as a mental calculation strategy using known facts

For this lesson you will need:

A pen/pencil, a piece
of paper and a ruler.

Upper KS2
Number, Addition
and Subtraction

Lesson 21

$$\begin{array}{r} 52.13 - 3.76 = 48.37 \\ \downarrow +40 \qquad \downarrow +40 \\ \boxed{92.13} - 3.76 = 88.37 \end{array}$$

Keep the notes
that you make in
the lesson today.
Tomorrow you
will review them
before beginning
your new
learning.

Quiz

Open the quiz on Google Classroom and complete the questions for lesson 21.

Spellings

Using the logins Miss Lander posted on Google Classroom on 16th June, go to [EdShed Web Game - Spelling Shed and Maths Shed](#) and play the game.

Reading

20 minutes

Tom's Midnight Garden

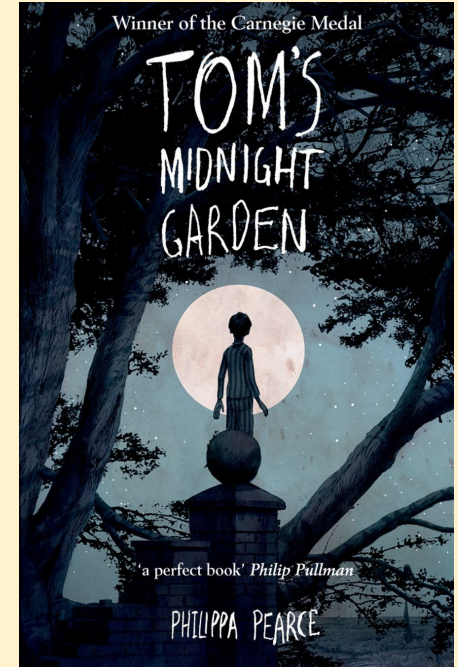
By Philippa Pearce

Listen and read along with
Miss Lander

Use the text to answer the
explain questions.

Explain

1. Where is Tom at this point?
2. How do we know that Tom is becoming tired as the clock strikes nine and ten?
3. What word does Philippa Pearce use in paragraph 3 to prove that the 13th strike shocks Tom enough to wake his mind with a sharp jolt? Is this a fast or slow action?



Daily English Learning

40 minutes

**LO: To describe a
character's feelings and
thoughts.**

Wednesday 15th July 2020

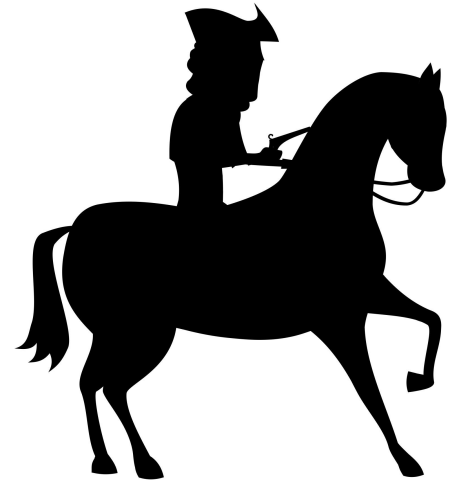
Steps to success for this lesson:

- **Feeling and thinking**
- **Dialogue**
- **Eye-witness**

Feeling and thinking

Who are the characters in the text?

- *First voice* - the highwayman
- *Second voice* - the landlord's daughter
- *Third voice* - the ostler
- *Fourth voice* - the Captain of the Guards



What is an ostler?

Write your definition here:

What role do you think the Guards played in this historical period?

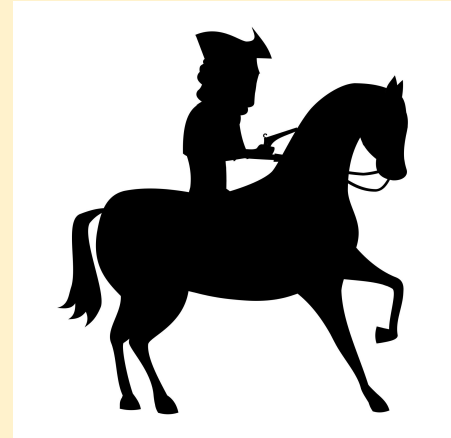
Write your thoughts here:

Each of the paragraphs is a freeze frame in the story.

Choose one of the characters and create a bank of phrases to describe their feelings and thoughts (show not tell). Use the third person. For example, the highwayman:

- His brimming heart soared
- Couldn't wait to behold her sparkling eyes

Now it's your turn - add to these or choose a different character:

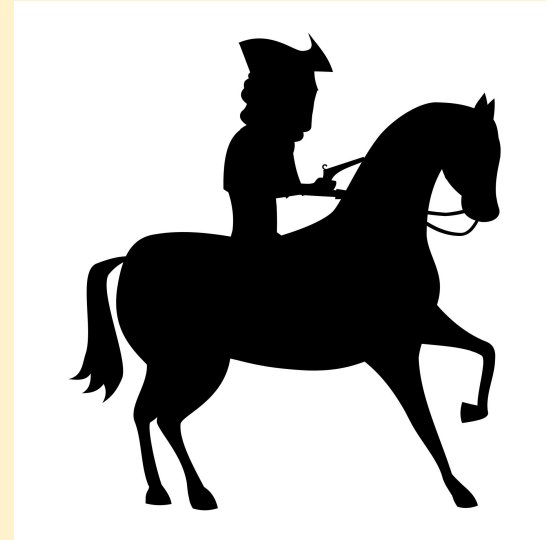


Describe the character's facial expression and body position

E.g. the highwayman:

- His smile reached his bright eyes
- A look of determination
- He leaned forward to urge the horse to gallop

Your turn - add to these or choose your own character:



Dialogue

Write their thoughts as dialogue.

REMEMBER: punctuate correctly!

E.g. the highwayman

- “Her radiant image fills my mind,” mused the highwayman.
- “Pockets full of gold will surely impress the prize that awaits me,” he thought happily.

Your turn - add to these or choose your own character:

Eye-witness

You are going to consider your character from one of the other characters' perspective.

E.g. looking at the highwayman from the Captain of the Guards' perspective.

Your turn - add to these or choose your own character:

Describe what they saw.

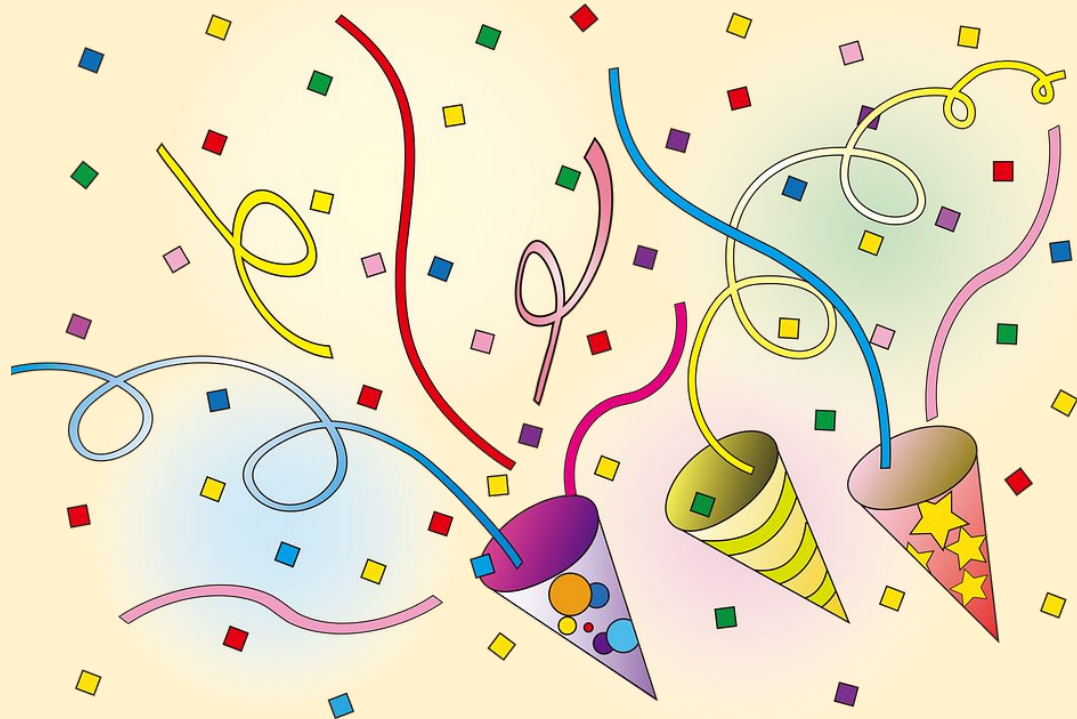
- The horse and his rider flashed along the road, the criminal's chin jutting out determinedly.
- The highwayman swaggered up to the inn door after dismounting.

Word of the Week

5 minutes

Round of applause for this week's word:

robust



Can you put it in a sentence?



Wider Work - French and Music

1 hour

French and Music slides will
be added to Google
Classroom separately as
assignments.

Creative Learning Opportunities

1 hours

Choose an activity to complete in this time. Create a journal to keep track of the activities you have done.

Creative Learning Opportunities:

<https://classroom.google.com/u/0/c/Njl4NDkyODk0ODBa/m/NTQ1NzQ1NzYzMDJa/details>

<https://classroom.google.com/u/0/c/Njl4NDkyODk0ODBa/m/NTQ4NjlzMDQ5MjJa/details>

<https://classroom.google.com/u/0/c/Njl4NDkyODk0ODBa/a/NTM2NTM5NTM2MzRa/details>

<https://classroom.google.com/u/0/c/Njl4NDkyODk0ODBa/m/NzM3MTQ3OTEwNzNa/details>

<https://classroom.google.com/u/0/c/Njl4NDkyODk0ODBa/m/NjEzODc1MTUwMDVa/details>

<https://classroom.google.com/u/0/c/Njl4NDkyODk0ODBa/a/NTQyNjQzNzk3MDFa/details>

Create your journal using the slides created here:

<https://classroom.google.com/u/0/c/Njl4NDkyODk0ODBa/a/NzQzMDgyNTE1ODRa/details>

PE

30 mins to 1 hour

Real PE

The website address is: home.jasmineactive.com

Parent email: parent@whyteleafe-1.com

Password: whyteleafe

Login and access the daily and weekly guidance for PE at home

Fitt In

Website : https://www.fitt-in.co.uk/checkout?rid=m4xDde&cf_3=g95

Username : whyteleafeprimary@fitt-in.co.uk

Password : WPS2020HomeUserA1F

Login and access lots of videos and resources to do PE at home