

Home Learning - Year 3

14.5.20

All of these activities mirror the learning assignments on Google Classroom. If you are having issues using Google Classroom it is fine to do any tasks on paper at home.

English - Reading - The Water Babies

Please read the text and answer the decode, explain and retrieval questions.

The Water Babies

By Charles Kingsley

Tom looked up into her eyes, and loved her, and loved till he fell fast asleep from pure love.

And when he awoke, she was telling the children a story...

'Don't go away', said little Tom. 'This is so nice. I never had anyone to cuddle me before'.

'Don't go away', said all the children: 'you have not sung us one song'.

'Well, I have time for only one. So what shall it be?'

'The dolly you lost! The dolly you lost!' cried all the babies at once.

So the strange fairy sang:

'I once had a sweet little doll, dears,

The prettiest doll in the world:

Her cheeks were so red and so white, dears,

And her hair was so charmingly curled.

But I lost my poor little doll, dears,

As I played in the heath one day:

And I cried for her more than a week, dears,

But I never could find where she lay.

I found my dear little doll, dears,

As I played in the heath one day.

Folks say she is terribly changed, dears,

For her paint is all washed away,

And her arm trodden off by the cows, dears,

And her hair not the least bit curled.

Yet for old sakes' sake she is still, dears,

The prettiest doll in the world.



Thursday 14th May 2020

Reading - The Water Babies

Read the text first **before** answering the questions. Remember only to type answers in the right hand columns. Challenge yourself to type your answers in full sentences.

Decode/explain

| Questions | Answers |
|---|---------|
| 1. Find the word 'cuddle'. Is this word warm and loving or cold and harsh? Why do you think Tom uses this word when he speaks to the fairy? | |
| 2. How do we know the fairy cannot stay longer with the children? | |
| 3. Was the doll lost in the town or the countryside? Why do you think this? | |

Retrieve





| Questions | Answers |
|--|---------|
| 1. What was the name of the song the strange fairy sang? | |
| 2. How many verses does this song have? | |
| 3. How long did she cry for when she lost her doll? | |
| 4. What colour were the dolls cheeks? | |

Maths - LO: telling the time to the nearest 5 minutes

Please view the slides and then answer the questions on the google document.

If you would like to tune in to Gareth Metcalfe's daily brain challenge, this is brilliant for reasoning and problem solving.

<http://www.iseemaths.com/home-lessons/>

| | | | |
|--|--|---|--|
| Date: 13th May 2020 | | LO: telling the time to the nearest 5 minutes | |
| How did you get on with these activities? Write the letters under the pictures, like you usually do in class- show your adults how you do this. | | | |
|  | |  | |
| How I did: | | | |
| Know: | | Answers: | |
|  | | Who do you agree with? Explain your thinking. | |
| Understand: | | | |
| <p>This clock has lost its minute hand</p>  <p>What time could it be? Explain your answer</p> | | | |
| Apply: Give it a go, but don't worry if it's too tricky | | | |
| Answer the questions and fill in the gaps below: | | | |
| The short hand is the _____ hand and the _____ hand is the minute hand. | | | |
| There are _____ minutes in an hour. | | | |
| There are _____ minutes in half an hour. | | | |
| If the minute hand is pointing at 3, how many minutes have passed in this hour? | | | |



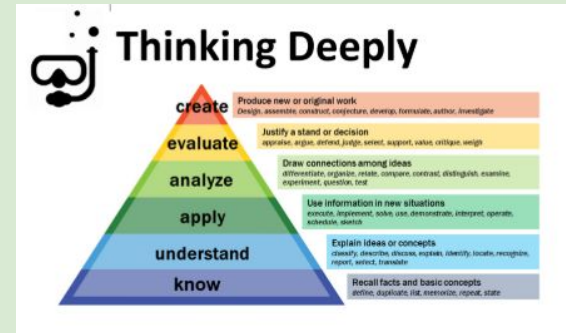
Time

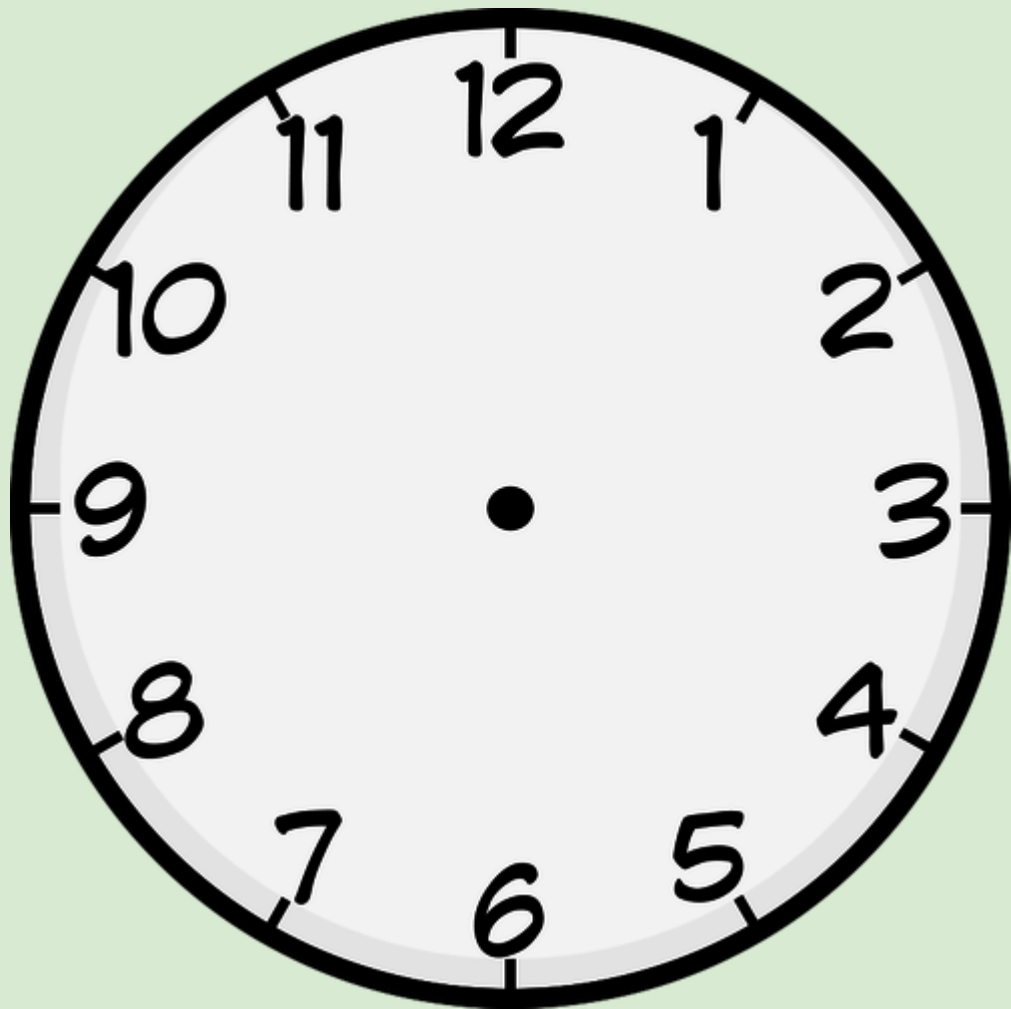
LO: to tell the time to the nearest minute

Counting

Please do these calculations as quick as you can:

$$53 - 11 = \quad 48 - 13 = \quad 87 - 10 =$$
$$31 + 9 = \quad 56 + 14 = \quad 63 + 12 =$$

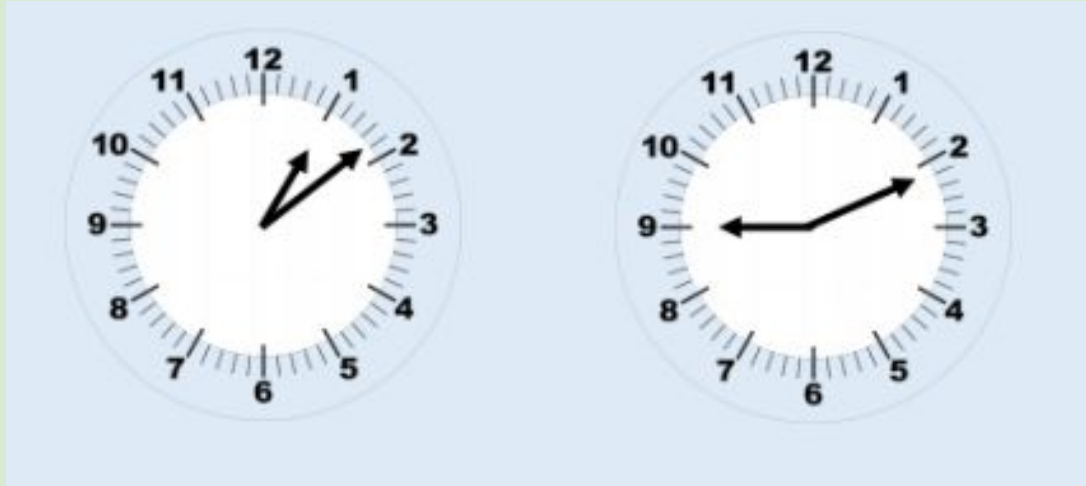




Remind yourself of the clock face.

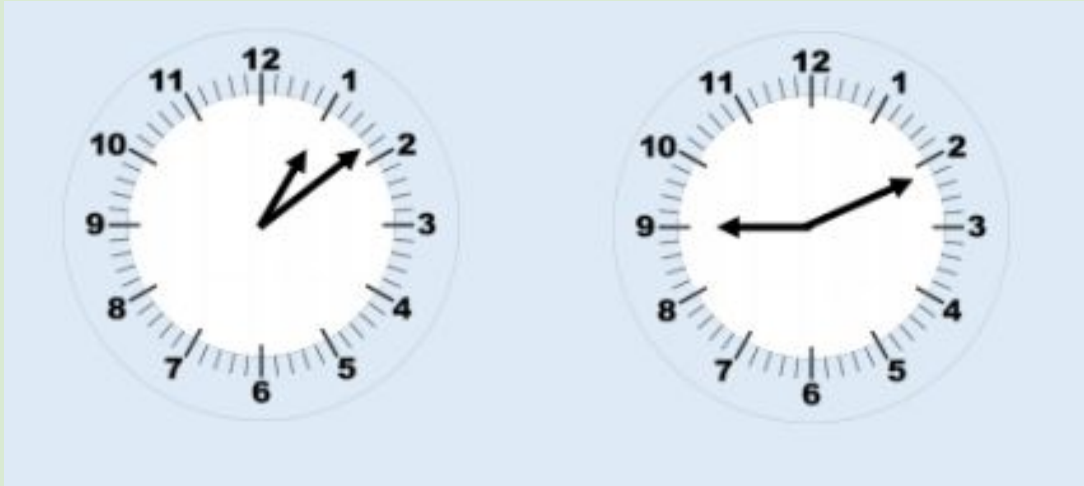
Count forwards in 5's around the clock face.

Count backwards in 5's around the clock face.



You will see some times. Please read to the nearest minute.

Which of these hands is the minute hand and which is the hour hand?

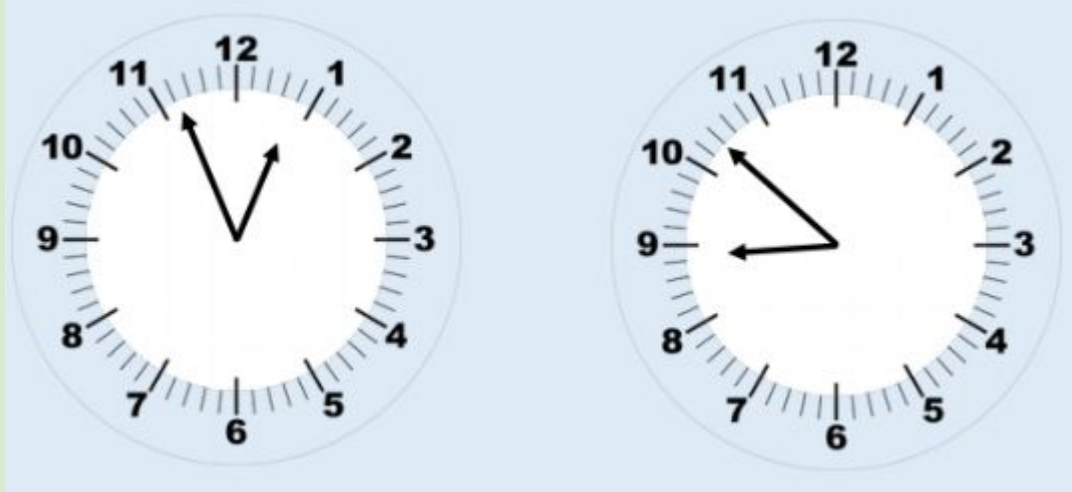


8 minutes past 1

11 minutes past 9

You will see some times. Please read to the nearest minute.

Which of these hands is the minute hand and which is the hour hand?

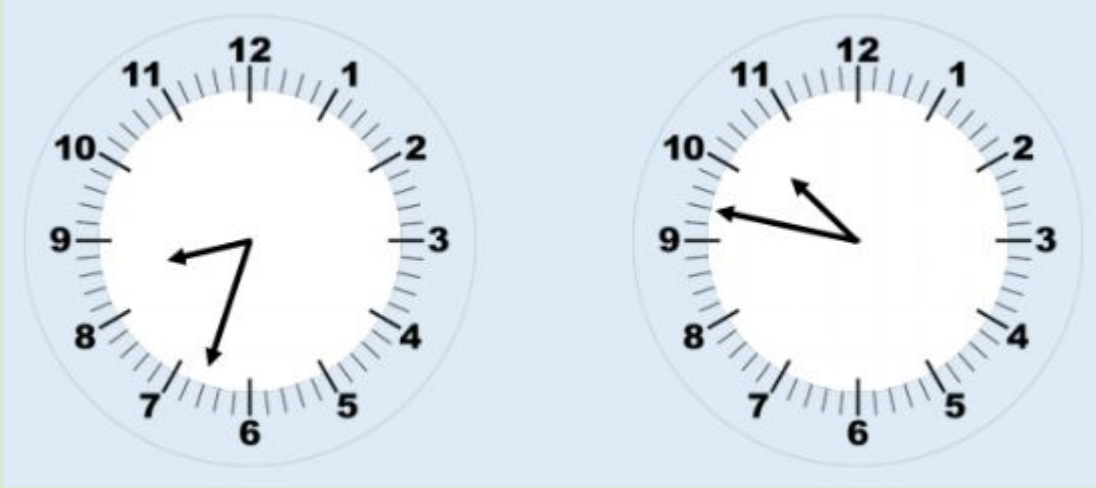


What time is it?

Read the clocks to the nearest minute.

4 minutes to 1

8 minutes to 9



Read these clocks to the nearest minute.

27 minutes to 9 13 minutes to 11



_____ minutes past _____



_____ minutes past _____

Read these clocks
to the nearest
minute.



22 minutes past 2

7 minutes past 3

Know



4 minutes
to 4



24 minutes
to 8



24 minutes
past 8

Show a member of your family on the clock what the time is.

Thinking Deeply
How many minutes is it until the next hour?

Understand

This clock has lost its hour hand.



The clock has lost its hour hand.

What time could it be?

Apply






Robert was meeting his friend Max at the park at 2.05 pm.

He was 16 minutes late.

What time did he arrive?

Science: LO: to show our current knowledge of plants

| | |
|---|--|
| Date: 14th May 2020 | LO: To show our current knowledge of plants |
| This is an unmarked activity to find out what you already know. Please only have help to read the questions | Teacher feedback (please leave blank): |
| This is what we will learn in our new topic: | |
| I can identify the functions of different parts of flowering plants |  |
| I can investigate the requirements of plants for life and growth | |
| I can investigate the way water is transported in plants | |
| I can explore the part that flowers play in the life cycle of flowering plants. | |
| Questions: | Write your answers here (or upload a photo of your mind map): |
| <p>1. Facts & vocabulary I know about plants You can use the mind map to help you- like we do in school. (Just write what you know, don't do any research today)</p>  | <ol style="list-style-type: none"> 1. Parts of a plant I know: 2. What do plants need to grow: 3. Stages of a plant life cycle: 4. Any questions I want to find out: |
| <p>2. Optional Dive Deeper challenge:</p>  | |

