

We will be follow a sequence of lessons provided by Oak National Academy.

Today we will be following **Lesson three**.

Please follow the slides to guide you to today's lesson and activity.

English

Instructions

Click on the link → [Sam's Sandwich](#)

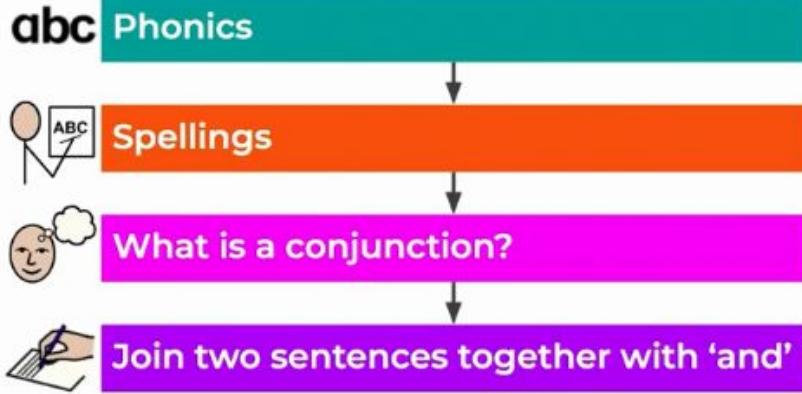
Click on start lesson

Instructions: to use the conjunction 'and'

In this lesson, we will be learning about the conjunction 'and'. We will be learning how to use it to join two simple sentences together. You will need a piece of paper and a pencil.

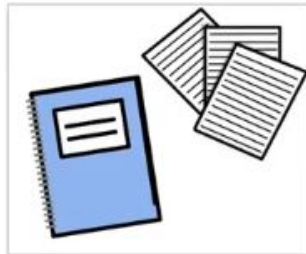
Click to play the video.

Today the lesson will focus on:

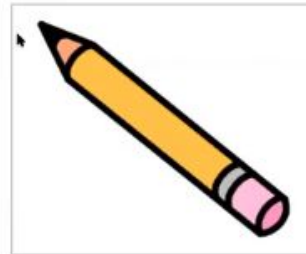


You will need:

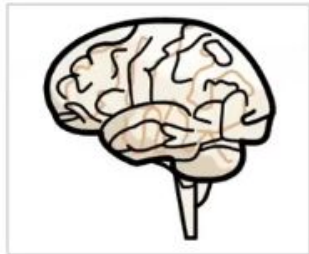
Exercise book or paper



Pencil



Brain



Today's task:



Have a go at matching the sentences. Remember take away the full stop and capital letter and add 'and'.



When you have watched the video, you can upload a picture of your sentences to Google Classroom.

Word of the week

In school we have a word of the week. We would like to continue this at home. Here is how we will structure your week.

Monday - guess what you think the word means

Tuesday - Learn the spelling of the word. Look at the sounds and syllables. Discuss the meaning of the word (we use a definition and pictures)

Wednesday - Discuss synonyms and antonyms.

Thursday - Apply the word in different contexts.

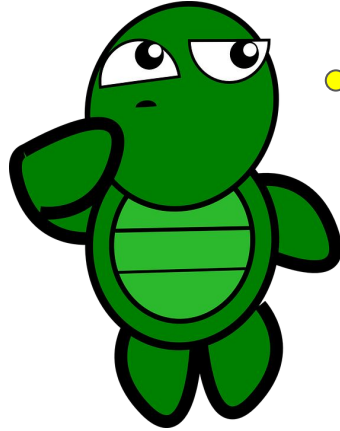
Friday - Write and discuss what you can remember about the word

Word of the week

Our word this week is : impossible

Wednesday – Discuss synonyms and antonyms.

Impossible



Can you think of
another word for
impossible?

hard

tricky

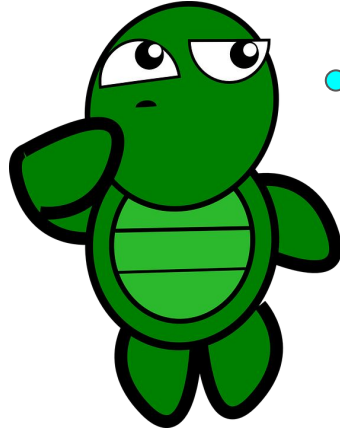
unbelievable

useless

hopeless

unachievable

Impossible



Now can you think of words that mean the opposite of impossible?

good

easy

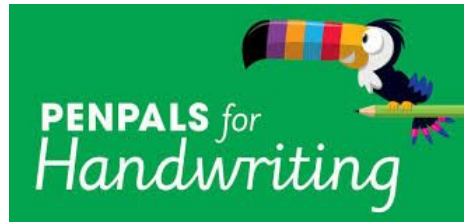
believable

hopeful

possible

achievable

Handwriting

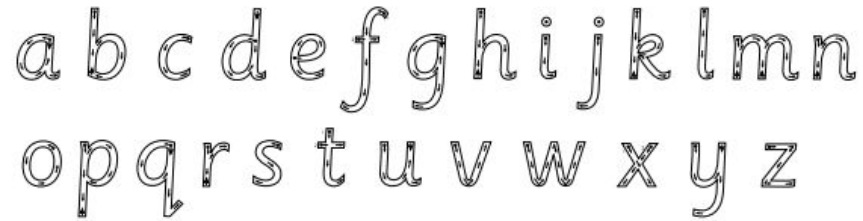


Many of you have asked about how to support with handwriting at home.

In school we use the program 'Penpals'

They have provided some resources which may be useful for you to look through. These are all on the information slides for this week.

As a reminder, correct letter formation for lower-case letters is as follows. The arrows show the direction of your child's pencil:



Capital letters are formed as follows:



Reading

Please see the slide in this week's information slides to help to support daily reading at home.

We have seen some photos of some fantastic reading, well done.

