

Yesterday we looked at Sam's Sandwich. Today we will follow lesson 2 of lessons provided by Oak National Academy. Please follow the slides to guide you to today's lesson and activity.

# English

# Instructions

Click on the link → [Commit a set of instructions to memory](#)

Click on start lesson

## Instructions: to commit a set of instructions to memory

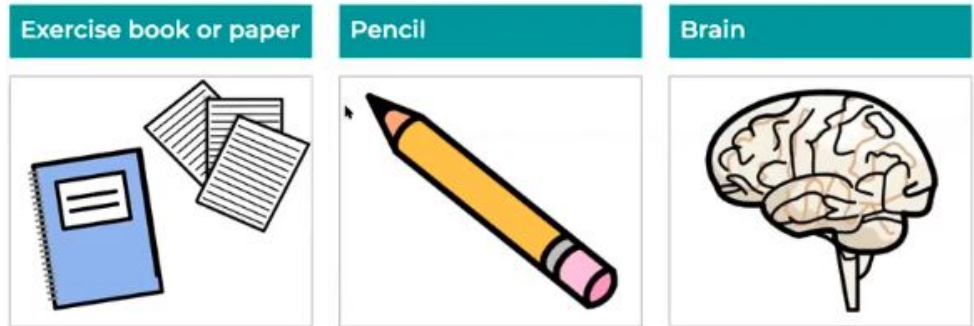
In this lesson, you will be hearing a recipe to make a disgusting sandwich. We will then be drawing the different parts of these instructions, ready to write them later in the week. You will need a piece of paper and a pencil.

Click to play the video.

Today the lesson will focus on:



You will need:



When you have watched the video, please upload a photo of your learning to Google Classroom and you will look at lesson 3 on Wednesday.

# Word of the week

In school we have a word of the week. We would like to continue this at home. Here is how we will structure your week.

Monday - guess what you think the word means

Tuesday - Learn the spelling of the word. Look at the sounds and syllables. Discuss the meaning of the word (we use a definition and pictures)

Wednesday - Discuss synonyms and antonyms.

Thursday - Apply the word in different contexts.

Friday - Write and discuss what you can remember about the word

# Word of the week

Our word this week is : impossible

Tuesday - Learn the spelling of the word. Look at the sounds and syllables. Discuss the meaning of the word (we use a definition and pictures)

# Word of the week

Have a look at the sounds in impossible and have a go at spelling the word.

impossible  
○ ○ ○ ○ — ○ ○ —



Look and Say

Look, Say  
and Write



Cover  
and Write



impossible

# Word of the week

Impossible has 4 syllables. Try to clap the word.

impossible

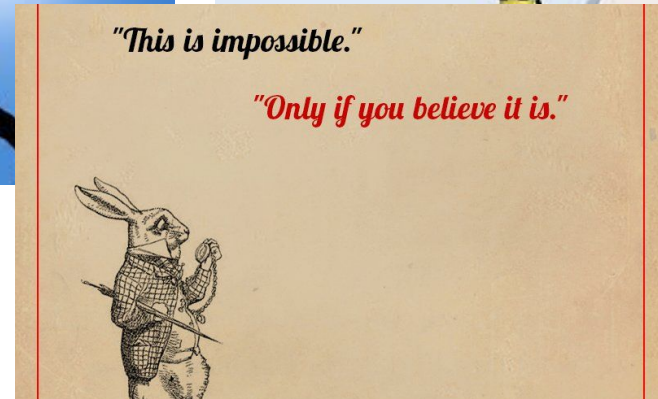
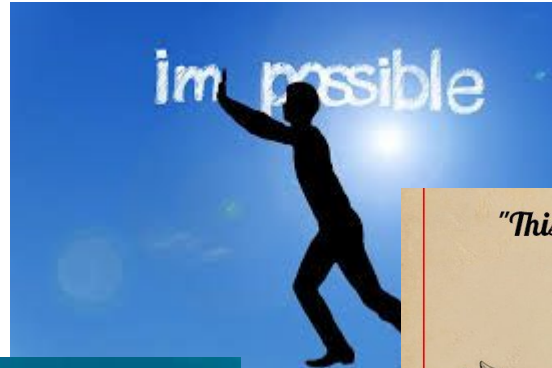




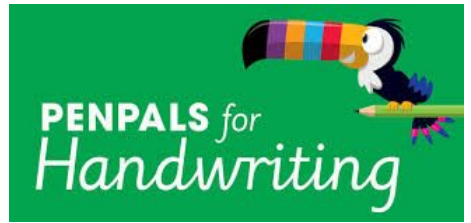
# Impossible means

- not able to happen, or be done; not possible.
- very difficult; not easy to deal with.

<https://kids.wordsmyth.net/we/?level=2&rid=20657>



# Handwriting

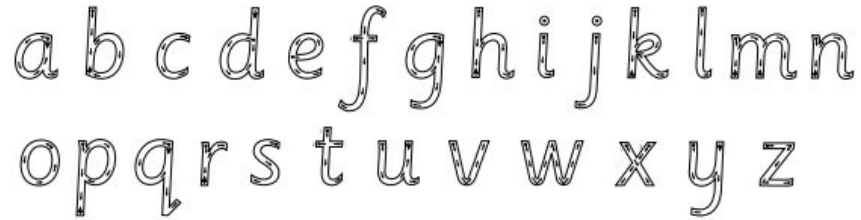


Many of you have asked about how to support with handwriting at home.

In school we use the program 'Penpals'

They have provided some resources which may be useful for you to look through. These are all on the information slides for this week.

As a reminder, correct letter formation for lower-case letters is as follows. The arrows show the direction of your child's pencil:



Capital letters are formed as follows:



# Reading

Please see the slide in this week's information slides to help to support daily reading at home.

We have seen some photos of some fantastic reading, well done.

