

We will be follow a sequence of lessons provided by Oak National Academy.

Today we will be following **Lesson four**.

Please follow the slides to guide you to today's lesson and activity.

English

Instructions

Click on the link → [Sam's Sandwich](#)

Click on start lesson

Instructions: to write a set of instructions

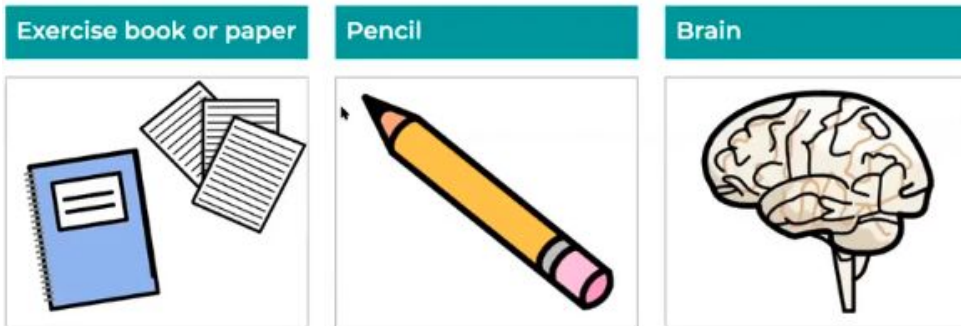
In this lesson, we will begin to write a set of instructions. We are going to write a list of the ingredients first and then write the first two instructions. You will need a piece of lined paper, a pencil and your map of the instructions.

Click to play the video.

Today the lesson will focus on:



You will need:



Today's task:

- Write the title for the instructions
- Write the list
- Write a sentence for the first box

When you have watched the video, you can upload a picture of your sentences to Google Classroom.



Please note:

As it is Bank Holiday tomorrow, we will be completing lesson 5 on Monday.

Word of the week

In school we have a word of the week. We would like to continue this at home. Here is how we will structure your week.

Monday - guess what you think the word means

Tuesday - Learn the spelling of the word. Look at the sounds and syllables. Discuss the meaning of the word (we use a definition and pictures)

Wednesday - Discuss synonyms and antonyms.

Thursday - Apply the word in different contexts.

Friday - Write and discuss what you can remember about the word

Word of the week

Our word this week is : **impossible**

Thursday - Apply the word in different contexts.

Friday - Write and discuss what you can remember about the word

Impossible

We can use the word impossible to describe something that not easy.

It was impossible to keep the baby quiet.



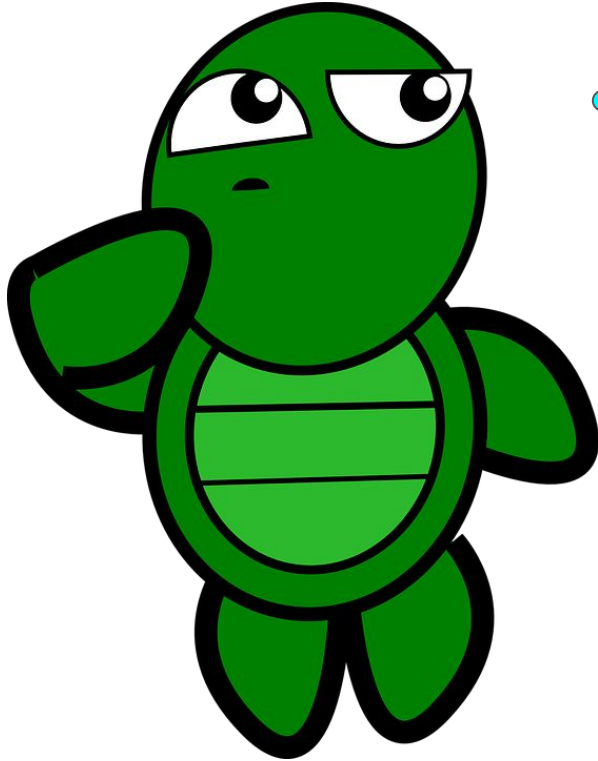
Impossible

We can also use the word impossible to describe something that not possible to achieve.

It is **impossible** to hold your breath 1 hour
- don't try it!

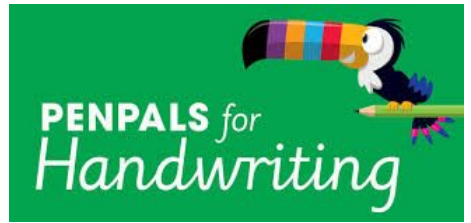


Impossible



Can you think of and write a sentence using the word impossible?

Handwriting

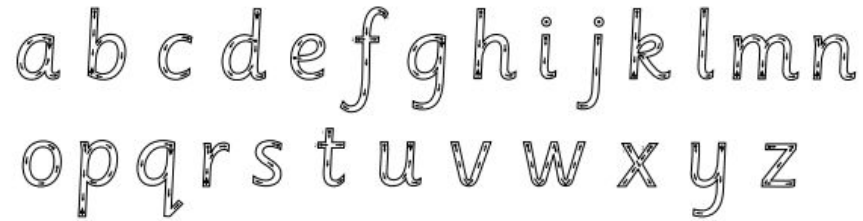


Many of you have asked about how to support with handwriting at home.

In school we use the program 'Penpals'

They have provided some resources which may be useful for you to look through. These are all on the information slides for this week.

As a reminder, correct letter formation for lower-case letters is as follows. The arrows show the direction of your child's pencil:



Capital letters are formed as follows:



Reading

Please see the slide in this week's information slides to help to support daily reading at home.

We have seen some photos of some fantastic reading, well done.

